

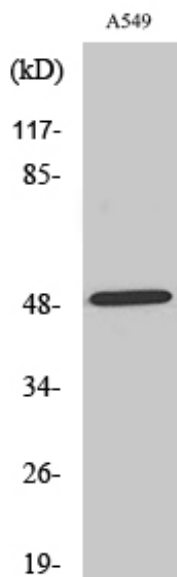


# NARFL Polyclonal Antibody

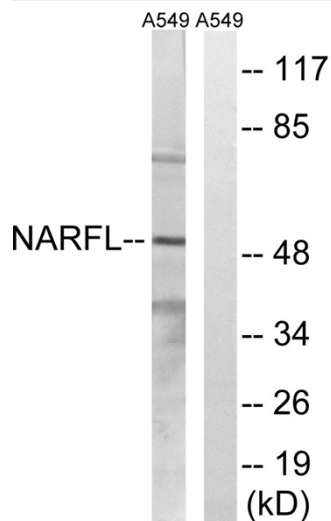
<b>Catalog No</b>	YP-Ab-14873
<b>Isotype</b>	IgG
<b>Reactivity</b>	Human;Rat;Mouse;
<b>Applications</b>	WB;IHC;IF;ELISA
<b>Gene Name</b>	NARFL
<b>Protein Name</b>	Cytosolic Fe-S cluster assembly factor NARFL
<b>Immunogen</b>	The antiserum was produced against synthesized peptide derived from human NARFL. AA range:387-436
<b>Specificity</b>	NARFL Polyclonal Antibody detects endogenous levels of NARFL protein.
<b>Formulation</b>	Liquid in PBS containing 50% glycerol, 0.5% BSA and 0.02% sodium azide.
<b>Source</b>	Polyclonal, Rabbit,IgG
<b>Purification</b>	The antibody was affinity-purified from rabbit antiserum by affinity-chromatography using epitope-specific immunogen.
<b>Dilution</b>	WB: 1/500 - 1/2000. IHC: 1/100 - 1/300. ELISA: 1/40000.. IF 1:50-200
<b>Concentration</b>	1 mg/ml
<b>Purity</b>	≥90%
<b>Storage Stability</b>	-20°C/1 year
<b>Synonyms</b>	NARFL; PRN; Cytosolic Fe-S cluster assembly factor NARFL; Iron-only hydrogenase-like protein 1; IOP1; Nuclear prelamin A recognition factor-like protein; Protein related to Narf
<b>Observed Band</b>	50kD
<b>Cell Pathway</b>	CIA complex,
<b>Tissue Specificity</b>	Widely expressed.
<b>Function</b>	function:Regulates HIF1A expression.,similarity:Belongs to the NARF family.,tissue specificity:Widely expressed.,
<b>Background</b>	function:Regulates HIF1A expression.,similarity:Belongs to the NARF family.,tissue specificity:Widely expressed.,
<b>matters needing attention</b>	Avoid repeated freezing and thawing!
<b>Usage suggestions</b>	This product can be used in immunological reaction related experiments. For more information, please consult technical personnel.



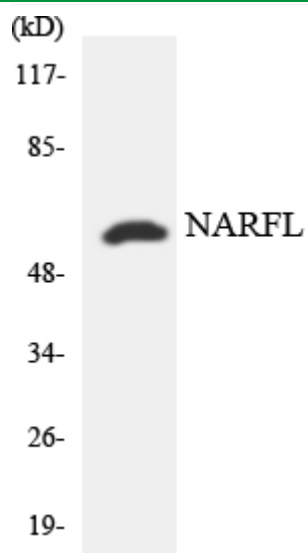
## Products Images



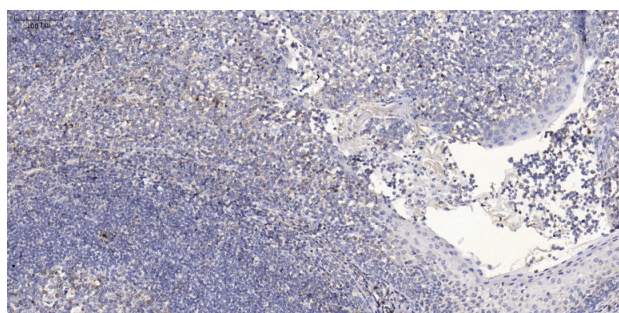
Western Blot analysis of various cells using NARFL Polyclonal Antibody cells nucleus extracted by Minute TM Cytoplasmic and Nuclear Fractionation kit (SC-003, Inventbiotech, MN, USA).



Western blot analysis of lysates from A549 cells, using NARFL Antibody. The lane on the right is blocked with the synthesized peptide.



Western blot analysis of the lysates from HeLa cells using NARFL antibody.



Immunohistochemical analysis of paraffin-embedded human tonsil. 1, Antibody was diluted at 1:200(4° overnight). 2, Tris-EDTA,pH9.0 was used for antigen retrieval. 3,Secondary antibody was diluted at 1:200(room temperature, 30min).